

I N T R O D U C I N G

# EOP Spring-Applied Motor Brake Captive Design

Electrically Released Brake  
for Outdoor Power Equipment



## Outdoor Power Equipment Applications

- ZTR Mowers
- Riding Mowers
- UTVs

Warner Electric is a world leader in the design and manufacture of hydraulic, pneumatic and electromagnetic brakes and clutches.

Based on long-term relationships, most major mower OEMs now view the Warner Electric engineering team as an extension of their internal engineering departments. OEMs routinely ship prototype mowers to Warner's Technology and Innovation Center so Warner engineers can develop a custom clutch/brake solution for the specific outdoor power equipment application and then define and perform all appropriate testing protocols in-house.

As a leader in the Turf & Garden market and an expert in the Electromagnetic braking technology, Warner Electric becomes the ideal partner to solve your Outdoor Power Equipment application.

Contact us today to discuss how our dedicated engineers can assist you.

For technical assistance call

**US: +1 800-825-9050**

**Europe: +33 (0)2 41 21 24 24**

## Parking and Stopping Standard Brake

The EOP (Very Thin) Captive range is a pre-assembled on/off dry failsafe electromagnetic brake. This failsafe brake is used for parking and emergency only. The brake uses a high coefficient of friction material and powerful coil to optimize torque in a low profile package. The coil can be linked with a pulse width modulation power supply to reduce power consumption and maintenance.

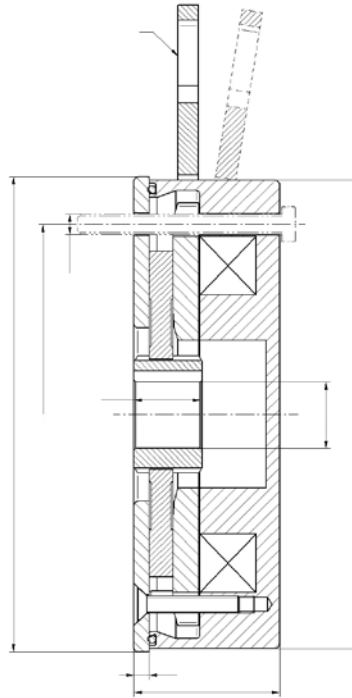
The benefits of this cost competitive range include one piece design for easy assembly, lower power consumption, and overall lower maintenance costs.

- High torque within a compact space envelope
- Multi-step braking versions available
- Low profile space saving design
- Hand release on request
- IP65 as a standard, IP67 on request
- Non-sticking friction material under harsh conditions
- UL certified – UL mark on request



## EOP Spring-Applied Motor Brake

# Electrically Released Brake



Size		10	20	35	60
Static Torque	Nm	15	35	50	120
	lb. ft	11	26	37	89
A	mm	109	138	155	175
	in.	4.291	4.433	6.102	6.890
B	mm	42	43	43	67
	in.	1.654	1.693	1.693	2.638
C	mm	4.6	4.5	5.6	-
	in.	0.181	0.177	0.220	-
D	mm	15 / 18 / 20 / 22 (H7)	15 / 18 / 20 / 22 (H7)	19 / 20 / 25 (H7)	20 / 25 / 30 (H7)
	in.	½ / ¾ / ¾ / ¾ (H7)	½ / ¾ / ¾ / ¾ (H7)	¾ (H7)	1 (H7)
J	mm	20	20	25	45
	in.	0.787	0.787	0.984	1.181
F	mm	90	112	168.3	152
	in.	3.543	4.409	6.626	5.984
G		3 × M5	3 × M6	4 × M6	3 × M8
		3 × #12	3 × #12	3 × 1/4"	3 × 5/16"
AA	mm	113	140	185	175
	in.	4.449	5.512	7.283	6.890
Hand Release		Available	Available	Available	Available on Request
Ambient Temperature		-20°C TO +60°C -4°F TO +140°F			
Voltage		Pulse Width Modulation - based on customer requirements			
Connector		On Request			