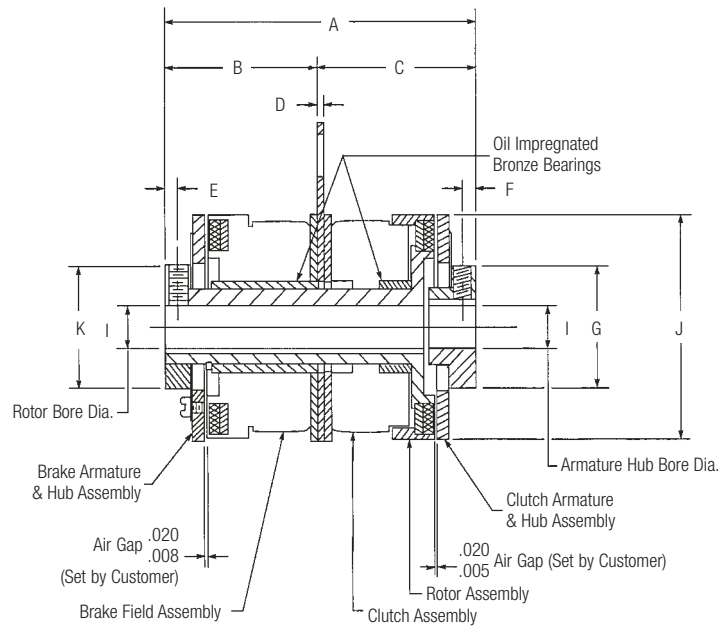
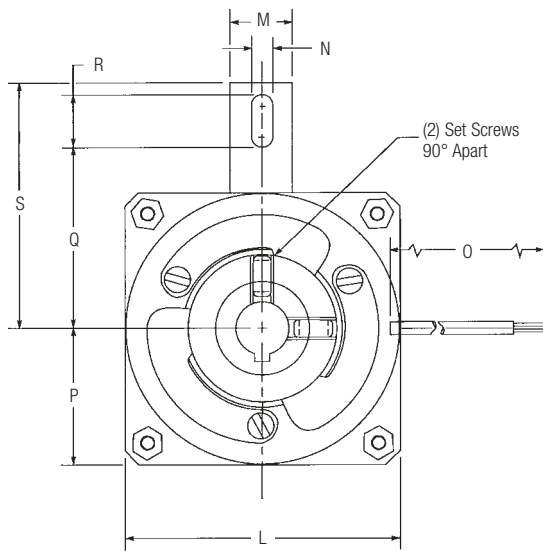


Stationary Field Clutch Coupling/Flange Mount Brake Combination For In-Line Shaft Application Models 110-265



Dimensions

Model No.	A Max.	B Ref.	C Nom.	D Max.	E Nom.	F Nom.	G Max.	H Nom.	I Nom.	J Max.	K Max.	L Max.	M Max.	N Min.	O ± .500	P Max.	Q Min.	R Min.	S Max.	Keyways		
																				Bore	Nominal Keyway	
110	1.970	.974	.983	.051	.094	.094	.700	-	1/4 5/16	1.160	.700	1.240	.520	.140	12.00	.630	.630	.300	1.050	N.A.	SET SCREWS ONLY	
180	2.608	1.245	1.340	.066	.114	.114	1.207	-	1/4 5/16 3/8	1.780	1.207	1.960	.520	.190	12.00	.990	1.100	.470	1.707	1/4 5/16 3/8	.0625 - .0655 .0625 - .0655 .094 - .097	.285 - .290 .347 - .352 .417 - .427
200	2.615	1.258	1.337	.066	.114	.114	1.207	-	5/16 3/8	2.000	1.207	1.960	.520	.190	12.00	.990	1.100	.470	1.707	5/16 3/8	.0625 - .0655 .094 - .097	.347 - .352 .417 - .427
225	3.552	1.722	1.810	.093	.115	.115	1.453	-	3/8 1/2	2.260	1.453	2.340	.580	.190	18.00	1.180	1.136	.480	1.832	3/8 1/2	.094 - .097 .125 - .128	.417 - .427 .560 - .567
265	3.677	1.815	1.842	.093	.150	.150	1.450	-	3/8 1/2 5/8	2.640	1.450	2.650	.645	.190	18.00	1.335	1.730	.480	2.395	3/8 1/2 5/8	.094 - .097 .125 - .128 .1885 - .1905	.417 - .427 .560 - .567 .709 - .716

Electrical (SFPB & SFPBC)

Model No.	90 VDC		24 VDC		12 VDC	
	Amps	Ohms	Amps	Ohms	Amps	Ohms
110	.047	1930	.198	121	.447	26.8
180	.066	1369	.289	83	.561	21.4
200	.074	1213	.322	74.4	.574	20.9
225	.079	1140	.322	74.6	.628	19.1
265	.088	1024	.350	67.1	.667	18.0

Lead wire is UL recognized style 1213, 1015 or 1429, 22 gage.
Insulation is .050" O.D. on 110 unit; .064" or .095" O.D. on all other units.

Customer shall maintain:

- A loose-fitting pin through the anti-rotation tab to prevent preloading the bearings.
- Contentricity between the shafts within .005 T.I.R.
- Initial air gap setting of .008 - .020 inches.