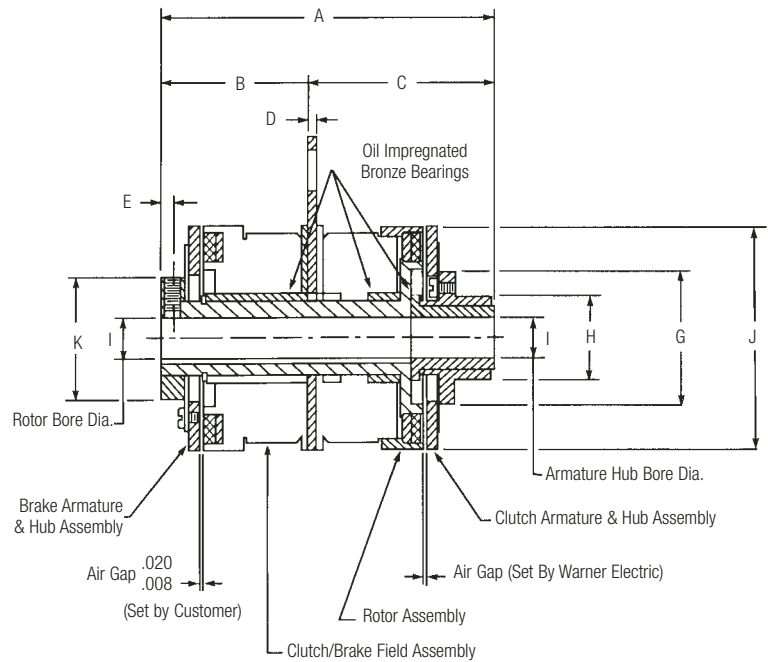
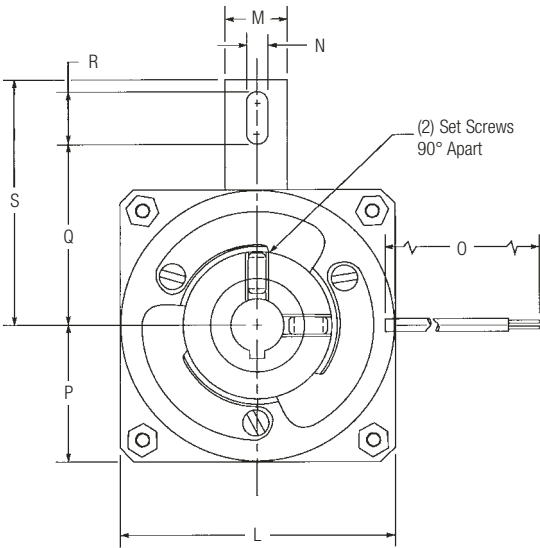


**Stationary Field Clutch/Flange Mount Brake
Combination For Parallel Shaft Application
Models 110-265**



Dimensions

Model No.	A Max.	B Ref.	C Nom.	D Max.	E Nom.	F Max.	G Max.	H ± .002	I Nom.	J Max.	K Max.	L Max.	M Max.	N Min.	O ± .500	P Max.	Q Min.	R Min.	S Max.	Keyways		
																				Bore	Nominal Keyway	
110	2.225	.974	1.229	.051	.094	.410	.700	.506 Knurl	1/4 5/16	1.160	.700	1.240	.520	.140	12.00	.630	.630	.300	1.050	N.A.	SET SCREWS ONLY	
180	2.855	1.245	1.590	.066	.114	.390	1.207	.622	1/4 5/16 3/8	1.780	1.207	1.960	.520	.190	12.00	.990	1.100	.510	1.707	1/4 5/16 3/8	.0625 - .0655 .0625 - .0655 .094 - .097	.285 - .290 .347 - .352 .417 - .427
200	2.993	1.258	1.715	.066	.114	.475	1.207	.622	5/16 3/8	2.000	1.207	1.960	.520	.190	12.00	.990	1.100	.470	1.707	5/16 3/8	.0625 - .0655 .094 - .097	.347 - .352 .417 - .427
225	3.737	1.722	1.995	.093	.115	.450	1.453	.872	3/8 1/2	2.260	1.453	2.340	.580	.190	18.00	1.180	1.136	.480	1.832	3/8 1/2	.094 - .097 .125 - .128	.417 - .427 .560 - .567
265	4.050	1.778	2.240	.093	.150	.427	1.610	.998	3/8 1/2 5/8	2.640	1.450	2.650	.645	.190	18.00	1.335	1.730	.480	2.395	3/8 1/2 5/8	.094 - .097 .125 - .128 .1885 - .1905	.417 - .427 .560 - .567 .709 - .716

NOTES:

1. Extended armature hubs Models 180 and 200 (3) #4-40 tapped holes on a .812 BC
2. Extended armature hub Model 225 (3) #6-32 tapped holes on a 1.187 BC
3. Extended armature hub Model 265 (3) #8-32 tapped holes on a 1.375 BC

Mechanical (SFPB & SFPBC)

Model No.	Static Torque lb. - in.	Inertia lb. - in. ²		Wt. oz.
		Rotor	Arm & Hub	
110	6	.0089	.0029 .0024	7
180	15	.098	.0360 .0310	22
200	25	.129	.0470 .0420	25
225	50	.295	.0790 .0700	45
265	80	.660	.2920 .3200	60

Customer shall maintain:

- A loose-fitting pin through the anti-rotation tab to prevent preloading the bearings.
- Initial air gap setting of .008 - .020 inches.