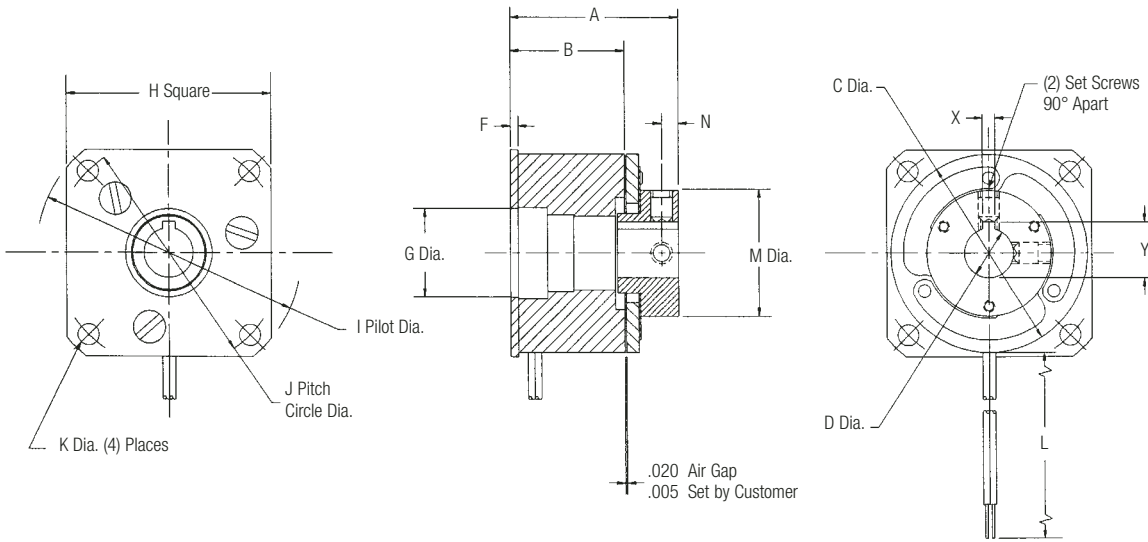


**Flange Mounted Brake**  
**Models 090-265**



**Dimensions**

Model No.	A Max.	B Nom.	C Max.	D Nom.	F Max.	G ± .001	H Max.	I ± .001	J Nom.	K Min.	L ± .500	Hub Keyway		M Nom.	N Max.	
												Bore	Nominal Keyway			
090	.885	.634	.905	1/8 3/16 1/4	.034	N.A.	.980	1.1995	1.030	.094	12.00	N.A.	SET SCREWS ONLY	.500	.070	
110	.954	.650	1.160	3/16 1/4 5/16	.052	N.A.	1.230	1.498	1.312	.123	12.00	N.A.	SET SCREWS ONLY	.687	.093	
150	1.304	.867	1.500	1/4 5/16 3/8	.063	N.A.	1.567	1.999	1.750	.156	12.00	N.A.	SET SCREWS ONLY	.960	.125	
180	1.269	.848	1.780	1/4 5/16 3/8	.064	.751	1.943	2.436	2.125	.186	12.00	1/4 5/16 3/8	.0625 - .0655 .0625 - .0655 .094 - .097	.285 - .290 .347 - .352 .417 - .427	1.190	.115
200	1.330	.901	2.000	5/16 3/8 1/2	.062	.751	1.943	2.436	2.125	.186	12.00	5/16 3/8 1/2	.0625 - .0655 .094 - .097 .125 - .128	.347 - .352 .417 - .427 .560 - .567	1.190	.115
225	1.757	1.173	2.260	3/8 1/2	.096	1.001	2.322	2.873	2.500	.160	18.00	3/8 1/2	.094 - .097 .125 - .128	.417 - .427 .560 - .567	1.005	.115
265	1.815	1.300	2.645	3/8 1/2 5/8	.080	1.062	2.630	3.499	3.125	.182	18.00	3/8 1/2 5/8	.094 - .097 .125 - .128 .1885 - .1905	.417 - .427 .560 - .567 .709 - .716	1.440	.150

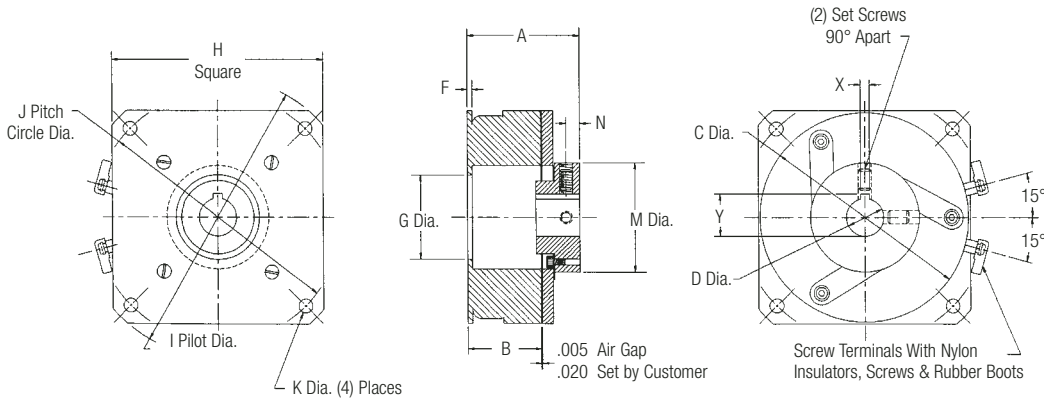
**Mechanical**

Model No.	Static Torque lb. - in.	Inertia lb. - in. <sup>2</sup>	Wt. oz.
		Arm & Hub	
090	2.5	.0011	2.0
110	6	.0024	3.2
150	10	.026	3.8
180	15	.031	11
200	25	.042	12
225	50	.070	20
265	80	.320	28

**Electrical**

Model No.	90 VDC		24 VDC		12 VDC	
	Amps	Ohms	Amps	Ohms	Amps	Ohms
090	.049	1970	.117	205	.246	48.8
110	.047	1930	.198	121	.447	26.8
150	.042	2150	.183	132	.380	31.6
180	.066	1369	.289	83	.561	21.4
200	.074	1213	.322	74.4	.574	20.9
225	.079	1140	.322	74.6	.628	19.1
265	.092	980	.374	64.2	.760	15.8

**Flange Mounted Brake  
Models 325-425**



**Dimensions**

Model No.	A Max.	B Nom.	C Max.	D Nom.	F Max.	G ± .001	H Max.	I ± .001	J Nom.	K Min.	L ± .500	Hub Keyway			M Nom.	N Max.
												Bore	Nominal Keyway			
													X	Y		
325	1.900	1.310	3.268	1/2 5/8 3/4	.097	1.751	3.200	4.186	3.750	.182	SCREW TERMINALS	1/2 5/8 3/4	.125 - .128 .1885 - .1905 .1885 - .1905	.560 - .567 .709 - .716 .836 - .844	1.825	.150
425	2.280	1.490	4.270	1/2 5/8 3/4 7/8 1	.097	1.875	4.255	5.624	5.000	.276	SCREW TERMINALS	1/2 5/8 3/4 7/8 1	.125 - .128 .1885 - .1905 .1885 - .1905 .1885 - .1905 .251 - .253	.560 - .567 .709 - .716 .836 - .844 .962 - .970 1.113 - 1.121	2.195	.250

**Mechanical**

Model No.	Static Torque lb. - in.	Inertia lb. - in. <sup>2</sup>		Wt. oz.
		Arm & Hub		
325	125	.561		35
425	250	2.30		60

**Electrical**

Model No.	90 VDC		24 VDC		12 VDC	
	Amps	Ohms	Amps	Ohms	Amps	Ohms
325	.091	988	.378	65.3	.729	16.5
425	.124	722	.468	51.2	.934	12.84

Lead wire is UL recognized style 1213, 1015 or 1430, 22 gage.  
Insulation is .050" O.D. on 090, 110, 150 units; .064" or .095" O.D. on all other units.

**Customer shall maintain:**

- Squareness of the brake mounting surface with armature shaft within .005 T.I.R.
- Concentricity between the brake mounting pilot diameter and the shaft not to exceed .010 T.I.R.
- Initial air gap setting of .005 - .020 inches.