

Typical Applications

- Automation Equipment
- High Speed Transportation Equipment
- Precision Measuring Equipment
- Semiconductor Equipment
- Woodworking Machinery

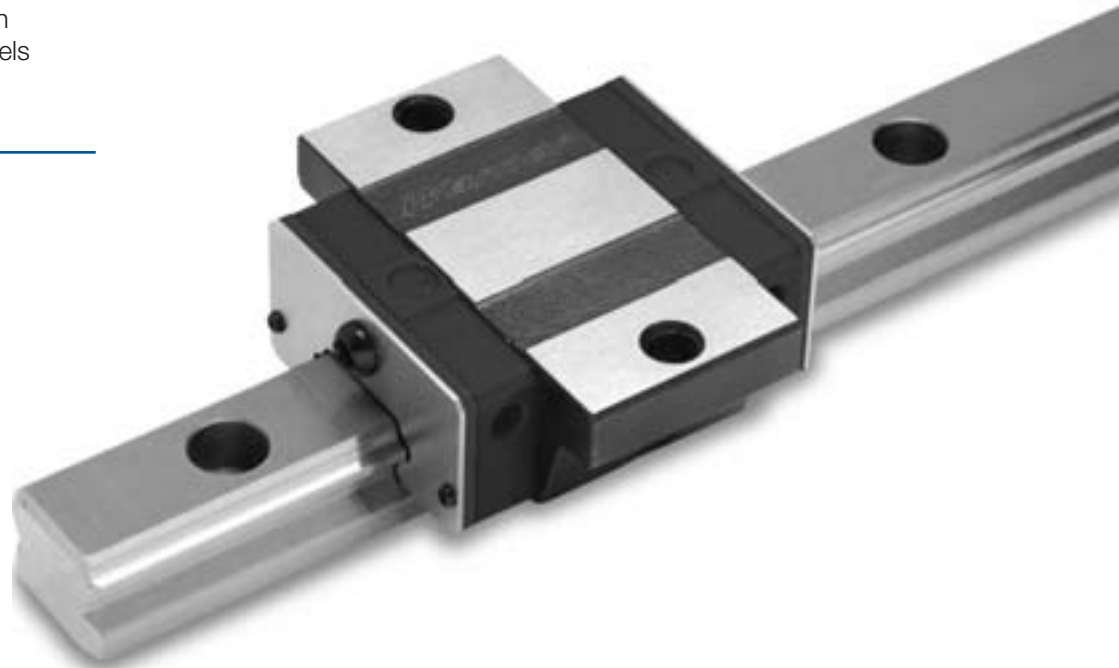
Preload

The ATE Series is offered with a minimal preload. Higher levels of preload can be provided when desired.

ATE Series

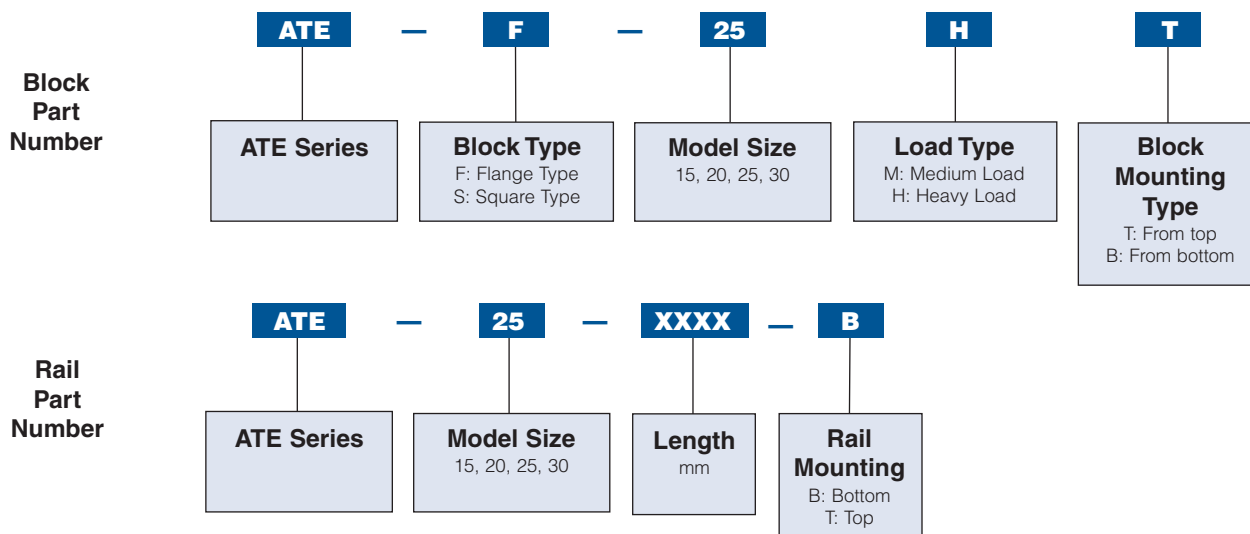
Interchangeable Block

The ATE series provides a four row design with a low profile rail where moderate loads and high speeds are required.



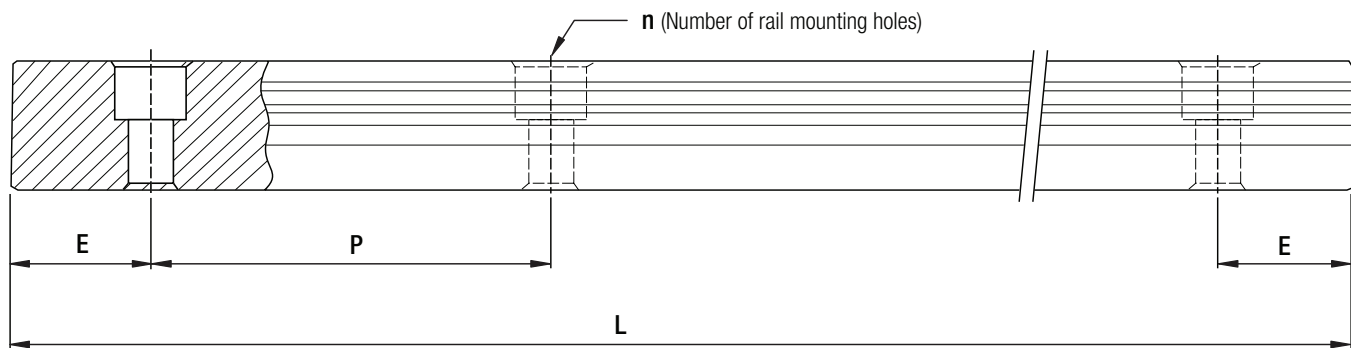
Ordering Number System for ATE Models

Example: ATE-F-25HT



ATE Series Rail Mounting

Warner Linear has stock for standard length of rails. As for the non-standard E value, to avoid the unstable end part of rail, it is recommended the E value should not be over 1/2 of pitch (P). On the other hand, the E value should not be less than the E_{min} due to the breaking of mounting hole.



$$L = (n - 1) \times P + 2 \times E$$

L: Total length of rail (mm)

n: Number of mounting holes

P: Distance between any two holes (mm)

E: Distance from the center of the last hole to the edge (mm)

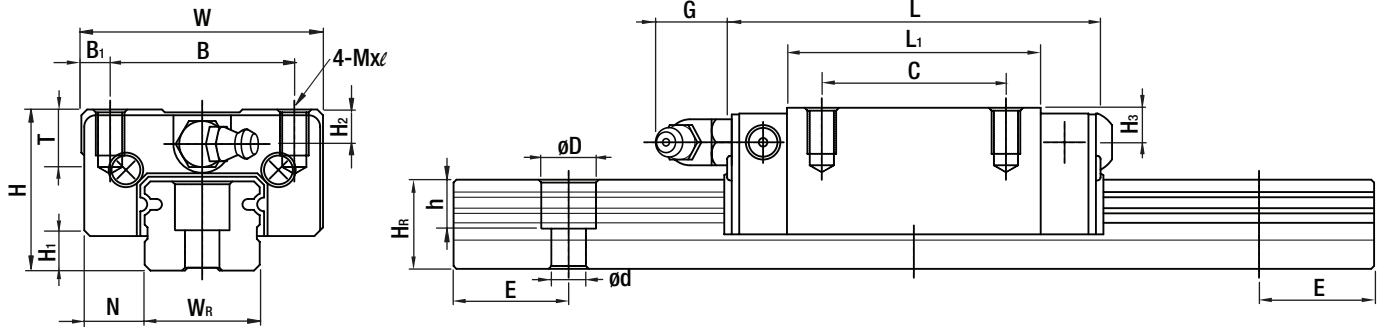
Unit: mm

Rail Length Dimensions (standard & maximum)

Item	ATE15	ATE20	ATE25	ATE30
Std. Length L(n)	160 (3)	220 (4)	220 (4)	280 (4)
	220 (4)	280 (5)	280 (5)	440 (6)
	280 (5)	340 (6)	340 (6)	600 (8)
	340 (6)	460 (8)	460 (8)	760 (10)
	460 (8)	640 (11)	640 (11)	1,000 (13)
	640 (11)	820 (14)	820 (14)	1,640 (21)
	820 (14)	1,000 (17)	1,000 (17)	2,040 (26)
	1,240 (1 ₁)	2,520 (32)	2,520 (32)	
	3,000 (38)	3,000 (38)		
Pitch (P)	60	60	60	80
Distance to End (E _s)	20	20	20	20
Max. Std. Length	1,960 (33)	4,000 (67)	4,000 (67)	3,960 (50)
Max. Length	2,000	4,000	4,000	4,000

- Note:**
1. Tolerance of E value for standard rail is 0.5~-0.5 mm. Tolerance of E value for butt-joint is 0~-0.3 mm.
 2. Maximum standard length means the max. rail length with standard E value on both sides.
 3. If different E value is needed, please contact Warner Linear.

ATES-MT/ATES-HT Type

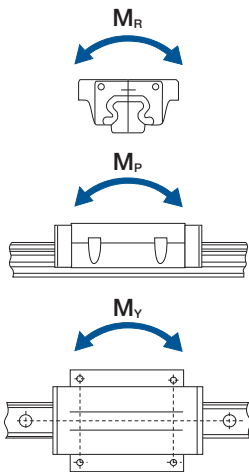


Dimensions

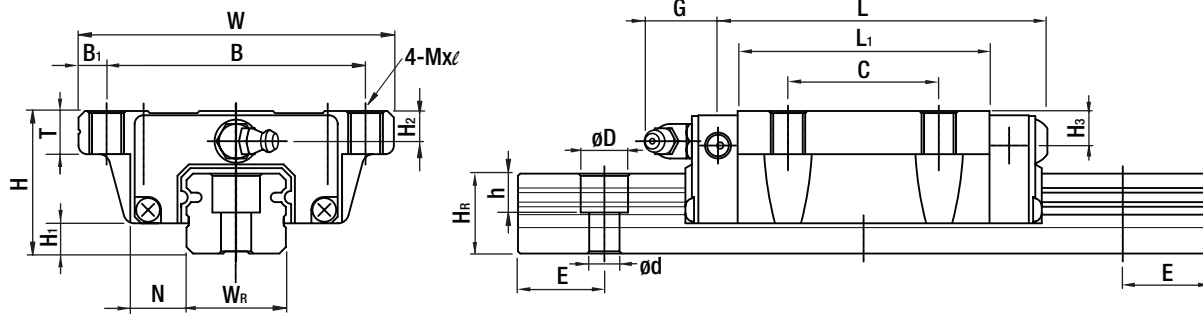
Model No.	Dimensions of Assembly (mm)			Dimensions of Block (mm)										Dimensions of Rail (mm)						
	H	H ₁	N	W	B	B ₁	C	L ₁	L	G	M x L	T	H ₂	W _R	H _R	D	h	d	P	E
ATES-15MT	24	4.5	9.5	34	26	4	-	23.1	40.7	5.7	M4x6	6	5.5	15	12.5	6	4.5	3.5	60	20
ATES-15HT							26	39.8	57.4											
ATES-20MT	28	6	11	42	32	5	-	29	50.6	12	M5x7	7.5	6	20	15.5	9.5	8.5	6	60	20
ATES-20HT							32	48.1	69.7											
ATES-25MT	33	7	12.5	48	35	6.5	-	35.5	61.1	12	M6x9	8	8	23	18	11	9	7	60	20
ATES-25HT							35	59	84.6											
ATES-30MT	42	10	16	60	40	10	-	41.5	71.5	12	M8x12	9	8	28	23	11	9	7	80	20
ATES-30HT							40	70.1	100.1											

Specifications

Model No.	Mounting Bolt for Rail (mm)	Basic Dynamic Load Rating C (kN)	Basic Static Load Rating C ₀ (kN)	Static Rated Moment			Weight	
				M _R (kgf-m)	M _P (kgf-m)	M _V (kgf-m)	Block (kg)	Rail (kg/m)
ATES-15MT	M3x16	440	590	0.08	0.04	0.04	0.09	1.25
ATES-15HT		640	1,010	0.13	0.10	0.10	0.15	
ATES-20MT	M5x16	650	920	0.13	0.06	0.06	0.15	2.08
ATES-20HT		970	1,450	0.22	0.16	0.16	0.24	
ATES-25MT	M6x20	1,080	1,330	0.23	0.12	0.12	0.25	2.67
ATES-25HT		1,550	2,290	0.38	0.32	0.32	0.41	
ATES-30MT	M6x25	1,550	2,030	0.40	0.21	0.21	0.45	4.35
ATES-30HT		2,470	3,390	0.68	0.55	0.55	0.76	



ATEF-MT/ATEF-HT Type

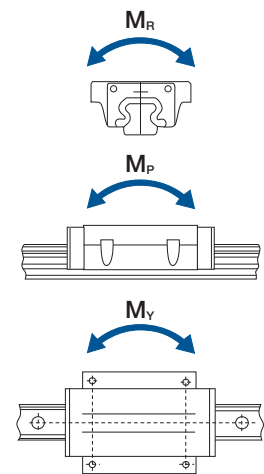


Dimensions

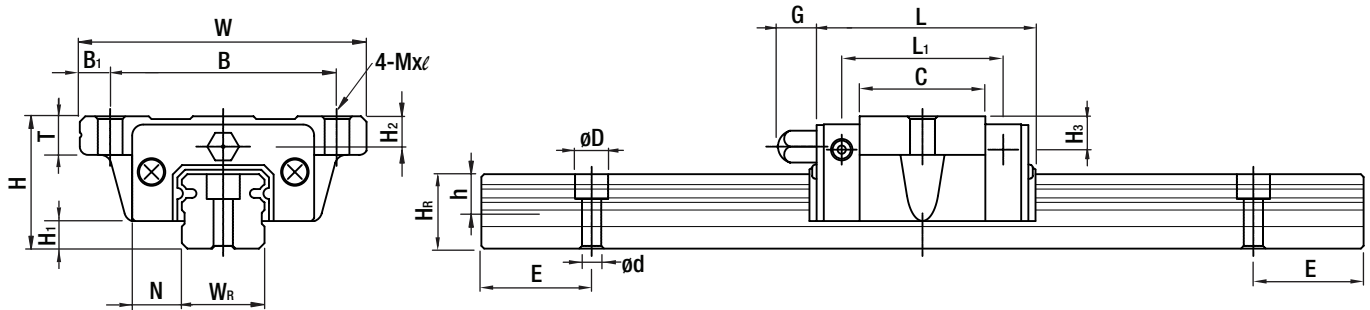
Model No.	Dimensions of Assembly (mm)			Dimensions of Block (mm)										Dimensions of Rail (mm)						
	H	H ₁	N	W	B	B ₁	C	L ₁	L	G	M	T	H ₂	W _R	H _R	D	h	d	P	E
ATEF-15MT ATEF-15HT	24	4.5	18.5	52	41	5.5	– 26	23.1 39.8	40.7 57.4	5.7	M5	7	5.5	15	12.5	6	4.5	3.5	60	20
ATEF-20MT ATEF-20HT	28	6	19.5	59	49	5	– 32	29 48.1	50.6 69.7	12	M6	9	6	20	15.5	9.5	8.5	6	60	20
ATEF-25MT ATEF-25HT	33	7	25	73	60	6.5	– 35	35.5 59	61.1 84.6	12	M8	10	8	23	18	11	9	7	60	20
ATEF-30MT ATEF-30HT	42	10	31	90	72	9	– 40	41.5 70.1	71.5 100.1	12	M10	10	8	28	23	11	9	7	80	20

Specifications

Model No.	Mounting Bolt for Rail (mm)	Basic Dynamic Load Rating C (kN)	Basic Static Load Rating C ₀ (kN)	Static Rated Moment			Weight	
				M _r (kgf-m)	M _p (kgf-m)	M _v (kgf-m)	Block (kg)	Rail (kg/m)
ATEF-15MT ATEF-15HT	M3x16	440 640	590 1,010	0.08 0.13	0.04 0.10	0.04 0.10	0.12 0.21	1.25
ATEF-20MT ATEF-20HT	M5x16	650 970	920 1,450	0.13 0.22	0.06 0.16	0.06 0.16	0.19 0.32	2.08
ATEF-25MT ATEF-25HT	M6x20	1,080 1,550	1,330 2,290	0.23 0.38	0.12 0.32	0.12 0.32	0.35 0.59	2.67
ATEF-30MT ATEF-30HT	M6x25	1,550 2,470	2,030 3,390	0.40 0.58	0.21 0.55	0.21 0.55	0.62 1.04	4.35



ATES-MB/ATES-HB Type



Dimensions

Model No.	Dimensions of Assembly (mm)			Dimensions of Block (mm)										Dimensions of Rail (mm)						
	H	H ₁	N	W	B	B ₁	C	L ₁	L	G	M	T	H ₂	W _R	H _R	D	h	d	P	E
ATES-15MB	24	4.5	18.5	52	41	5.5	–	23.1	40.7	5.7	ø4.5	7	5.5	15	12.5	6	4.5	3.5	60	20
ATES-15HB							26	39.8	57.4											
ATES-20MB	28	6	19.5	59	49	5	–	29	50.6	12	ø5.5	9	6	20	15.5	9.5	8.5	6	60	20
ATES-20HB							32	48.1	69.7											
ATES-25MB	33	7	25	73	60	6.5	–	35.5	61.1	12	ø7	10	8	23	18	11	9	7	60	20
ATES-25HB							35	59	84.6											
ATES-30MB	42	10	31	90	72	9	–	41.5	71.5	12	ø9	10	8	28	23	11	9	7	80	20
ATES-30HB							40	70.1	100.1											

Specifications

Model No.	Mounting Bolt for Rail (mm)	Basic Dynamic Load Rating C (kN)	Basic Static Load Rating C ₀ (kN)	Static Rated Moment			Weight	
				M _R (kgf-m)	M _P (kgf-m)	M _V (kgf-m)	Block (kg)	Rail (kg/m)
ATES-15MB	M3x16	440	590	0.08	0.04	0.04	0.12	1.25
ATES-15HB		640	1,010	0.13	0.10	0.10	0.21	
ATES-20MB	M5x16	650	920	0.13	0.06	0.06	0.19	2.08
ATES-20HB		970	1,450	0.22	0.16	0.16	0.32	
ATES-25MB	M6x20	1,080	1,330	0.23	0.12	0.12	0.35	2.67
ATES-25HB		1,550	2,290	0.38	0.32	0.32	0.59	
ATES-30MB	M6x25	1,550	2,030	0.40	0.21	0.21	0.62	4.35
ATES-30HB		2,470	3,390	0.68	0.55	0.55	1.04	

